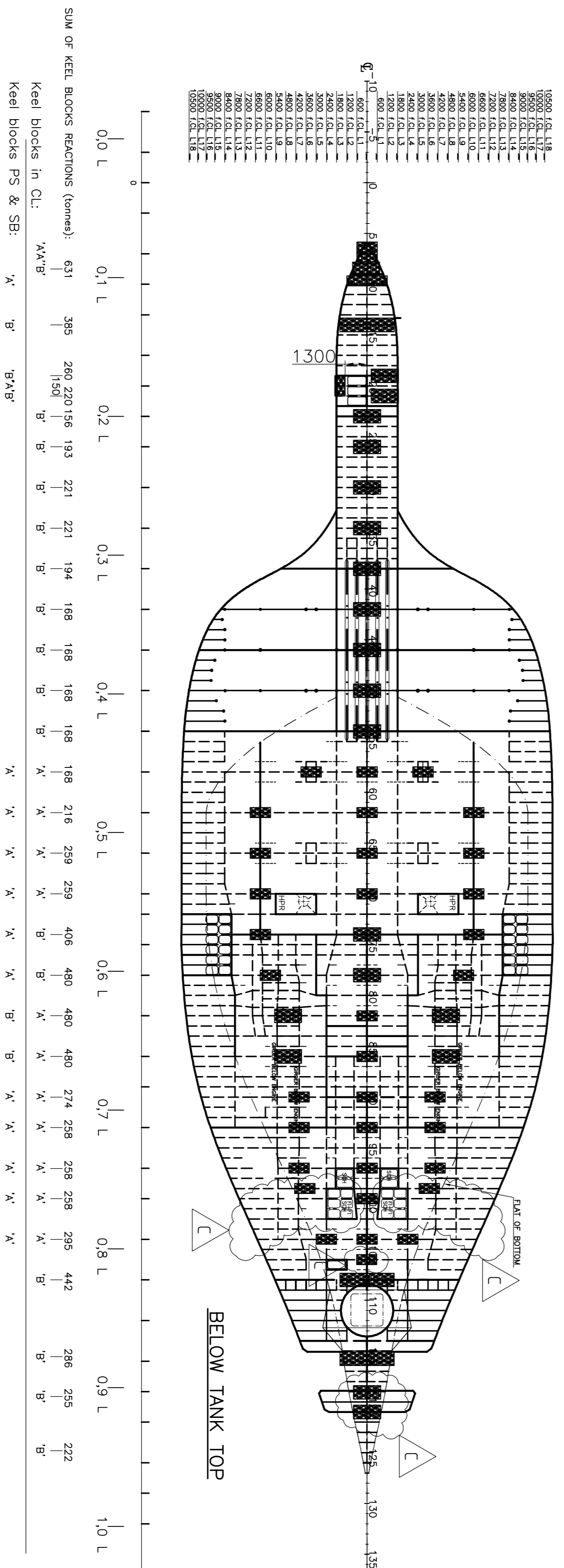
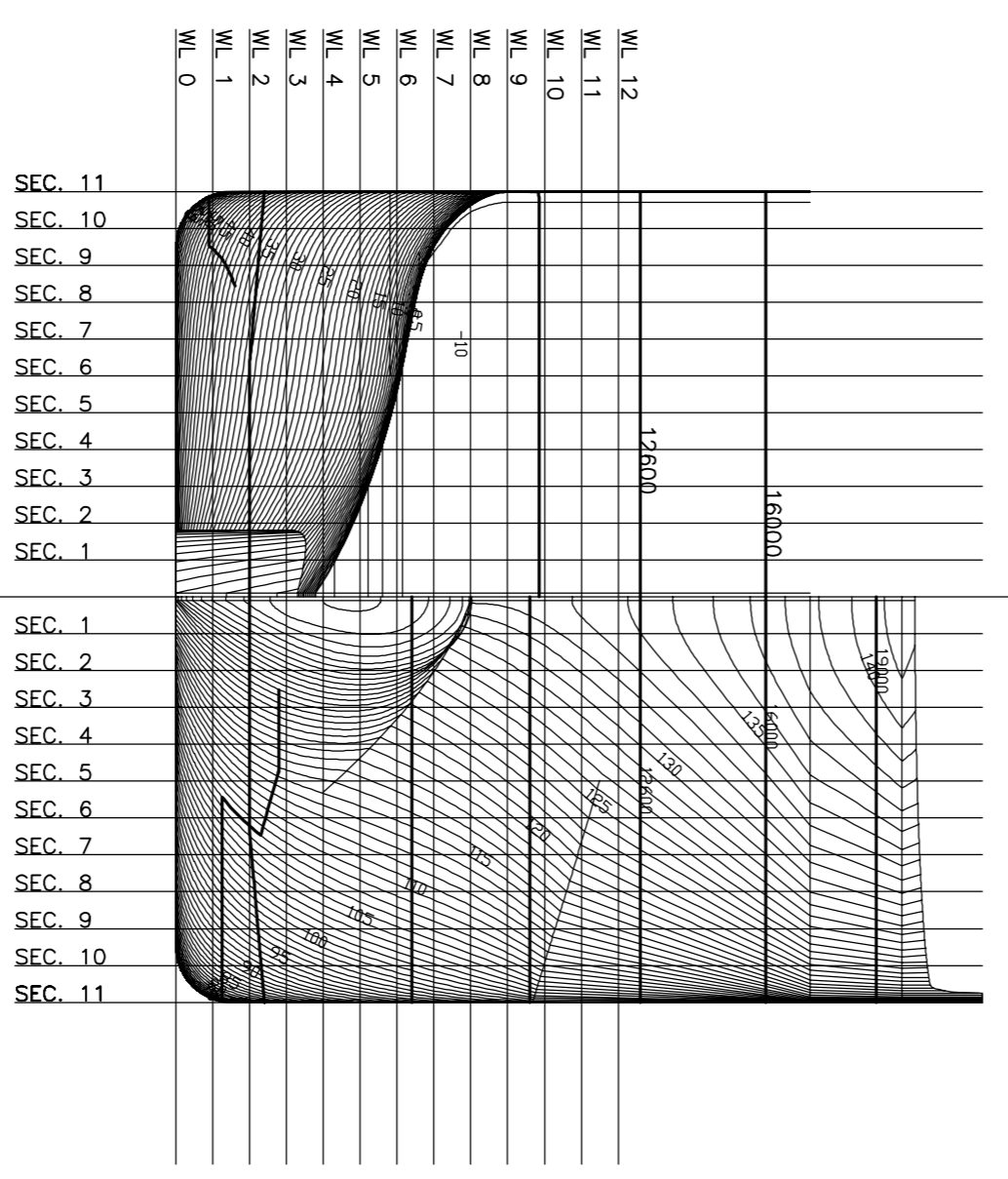
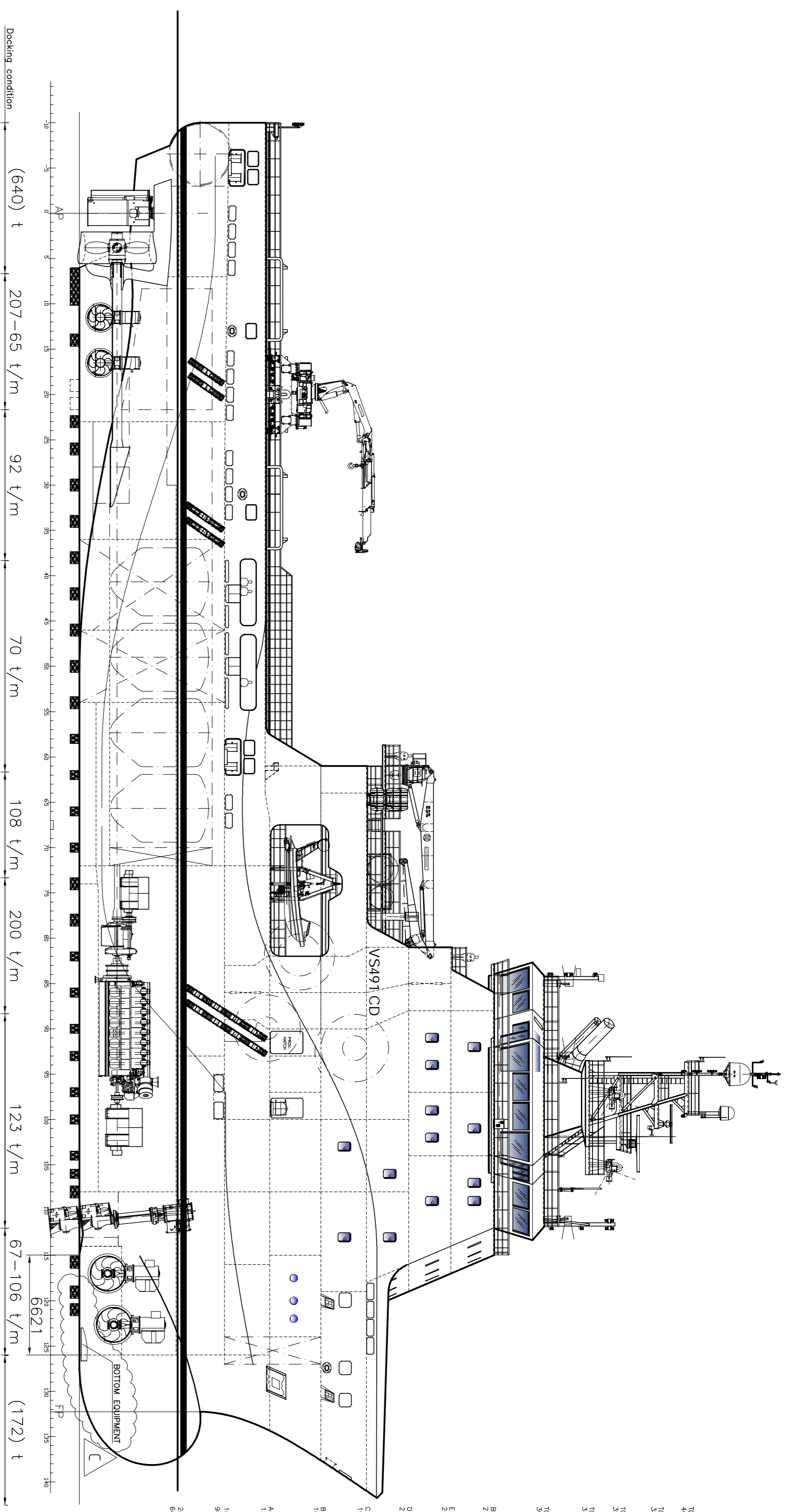


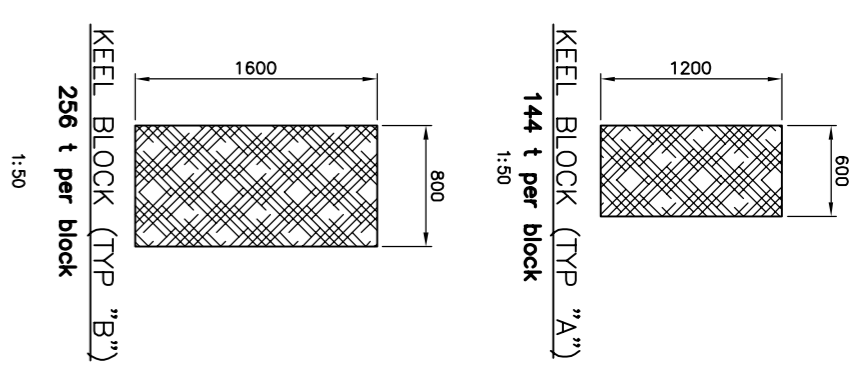
DOCKING CONDITION	
FLOATING POSITION:	
Displacement	7251,7 tonnes
Mean draft (moulded)	6,10 m
Draft AP (moulded)	6,08 m
Draft FP (moulded)	6,12 m
VCG	8,99 m
GM	1,53 m

- WATER BALLAST:	Σ 362 tonnes
Tanks: 01C/502S/503P/52S/73P/74S	
- FRESH WATER:	Σ 346 tonnes
Tanks: 11P/12S/601P/602S	
- FUEL OIL:	Σ 510 tonnes
Tanks: 203C/33P/34S/35P/36S/407C/43P/44S/53P/54S/55C	
- DRY BULK:	Σ 225 tonnes
- LUBRICATING OIL:	Σ 24 tonnes
Tanks: 211P/212S/213P/214S/216S	
- MISCELLANEOUS TANKS:	Σ 86 tonnes
Tanks: 20P/21P/24S/30P/30Q/30S/410C/56S	
- CREW AND STORES:	Σ 27 tonnes



PRINCIPAL PARTICULARS:

LENGTH OVER ALL:	91,00 m
LENGTH BETW. PERP.:	79,35 m
BREADTH MLD.:	22,00 m
DEPTH TO 1st DECK:	9,60 m
DEPTH TO 2nd DECK:	6,40 m
FRAME SPACING:	0,60 m
DECK AREA:	820 m ²



GENERAL NOTES:

- The vessel to be supported by blocks below webs and girders only.
- Design pressure in blocks are normally not to exceed 2N/mm².

Regarding water ballast in foreship:
It is recommended to empty all the ballast tanks in the foreship.

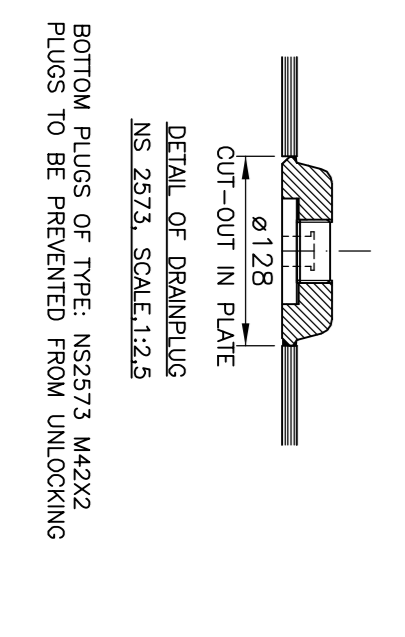
Bilge keel coordinates: see drawing of the bilge keel.

Bottom plugs:

- M72x3 (stainless steel) acc. to NS2573
- Plugs to be prevented from unblocking.
- Welding seam with mark number by each bottom plug.
- Welding seam at each corner of tank.

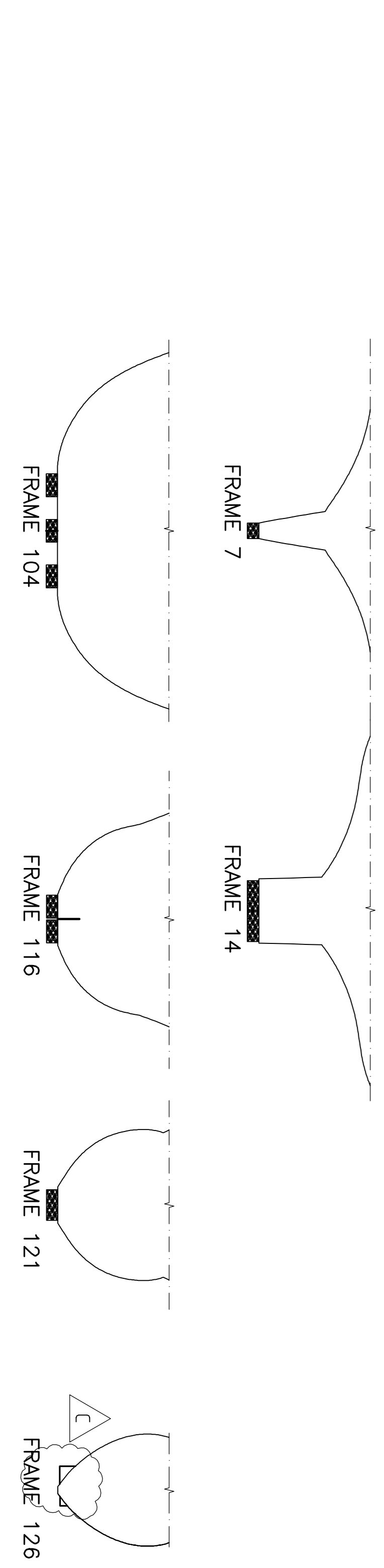
REFERENCE DRAWINGS:

- 3698 102-001 Lines and Body Plan
- 3698 171-001 Tank Plan
- 3698 207-001 Profile and Plans
- 3698 208-001 Shell Expansion
- 3698 262-004 Location of manholes and bottom plugs
- 3698 264-002 Bilge Keel
- 3698 410-001 Bottom equipment



SYMBOLS

BOTTOM PLUG



Approved Date/Date	Approved Date/Date	Checked: VAS/Dia
Approved Date/Date	Approved Date/Date	Checked: VAS/Dia
VS491 CD AHTS		
DOCKING PLAN		
WARTSILA		
Wartsila Ship Design		
WARTSILA PROJECT NO. 3698.011		
SCALE: 1:200		
DATE: 07.08.07		
DRAWN BY: 144		
FORWARD		
REAR		
REV: C		
SHEET: 1/1		